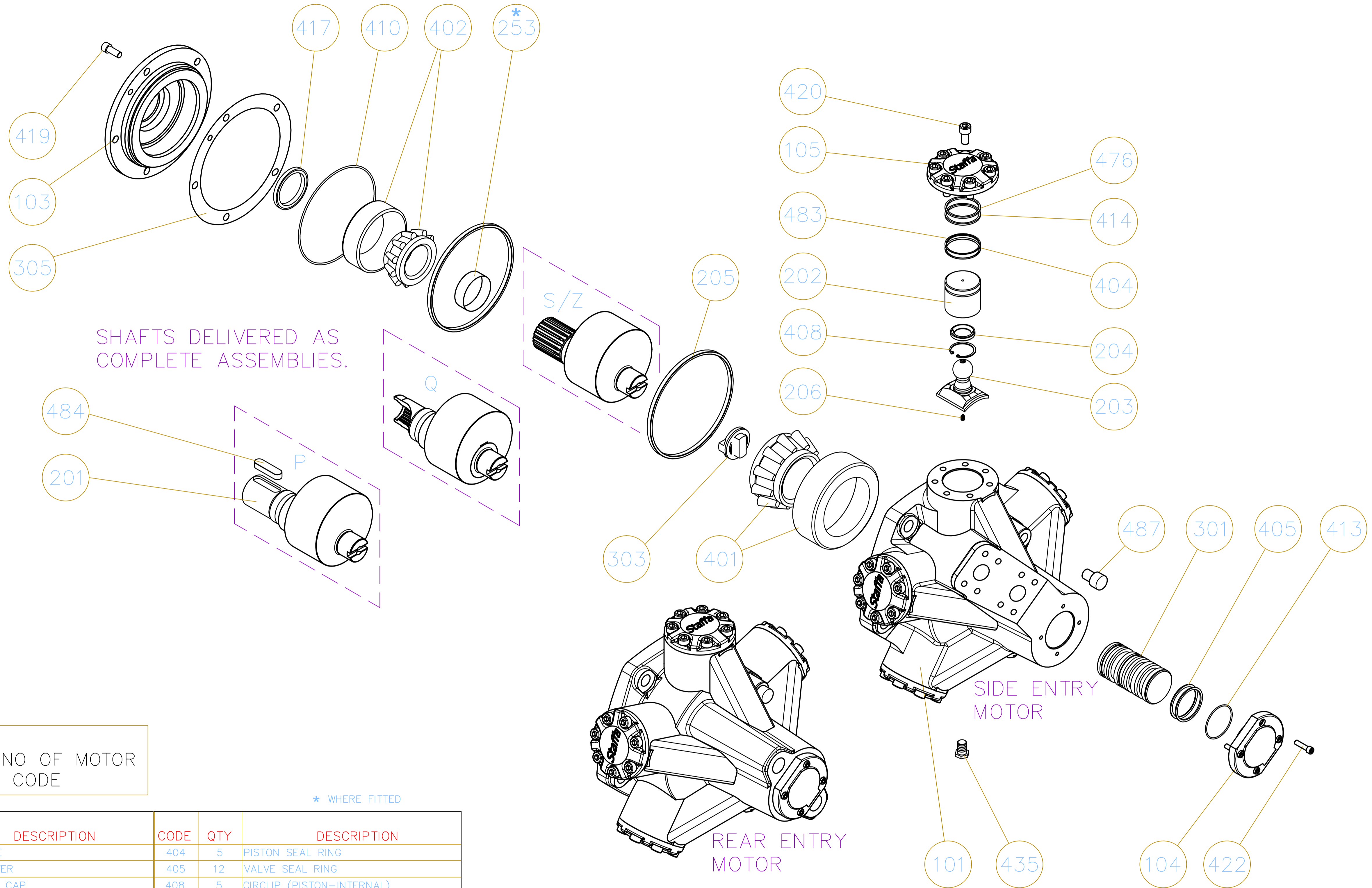


DRAWING No. 016472

ISSUE	CHANGE	DATE	CHK.
A		01.09	FS
B		01.12	FS

DO NOT SCALE

IF IN DOUBT-ASK



SHAFTS DELIVERED AS COMPLETE ASSEMBLIES.


SIDE ENTRY MOTOR

REAR ENTRY MOTOR

SPARES :
QUOTE SERIAL NO OF MOTOR
+ FULL MODEL CODE

* WHERE FITTED

CODE	QTY	DESCRIPTION	CODE	QTY	DESCRIPTION
101	1	MOTORCASE	404	5	PISTON SEAL RING
103	1	FRONT COVER	405	12	VALVE SEAL RING
104	1	VALVE END CAP	408	5	CIRCLIP (PISTON-INTERNAL)
105	5	CYLINDER HEAD	410	1	O-RING (FRONT COVER)
201	1	CRANKSHAFT	413	1	O-RING (VALVE END CAP)
202	5	PISTON	414	5	O-RING (CYLINDER HEAD)
203	5	CON-ROD	417	1	SHAFT SEAL
204	10	PISTON RETAINING HALF RING	419	5	S.H.C.S. (FRONT COVER)
205	2	CON-ROD RETAINING RING	420	35	S.H.C.S. (CYLINDER END CAP)
206	5	RESTRICTOR SCREW	422	4	S.H.C.S. (VALVE END CAP)
253 *	1	SHAFT SLEEVE	435	1	DRAIN PLUG
301	1	VALVE SPOOL	476	5	BACK-UP RING (CYLINDER END CAP)
303	1	OLDHAMS COUPLING	483	5	PISTON SEAL BACKING RING
305	-	SHIM (STEEL)	484	1	CUSTOMER KEY
401	1	REAR BEARING	487	1	PLASTIC PLUG
402	1	FRONT BEARING			

THIRD ANGLE PROJECTION	NAME	DATE	 Staffa Products <small>Ernesettle, Plymouth PL5 2QA www.kpm-eu.com</small>
	DR: M.NORMAN	07.01.09	
	CHK: FSTANTON	01.09	
	ENGR: FSTANTON	01.09	
WT: FSTANTON	01.09	TITLE	GENERAL ASSEMBLY (FOR SPARES) HMB030 MOTOR
ALL TECHNICAL DATA DISCLOSED HEREIN IS THE PROPERTY OF KAWASAKI AND SHALL NOT BE USED BY OTHERS FOR MANUFACTURE, PROCUREMENT OR DISCLOSURE WITHOUT THE WRITTEN PERMISSION OF THE OWNER.			SIZE: A1
			SCALE: NTS
			DRAWING No. 016472
			SHEET 1 of 1